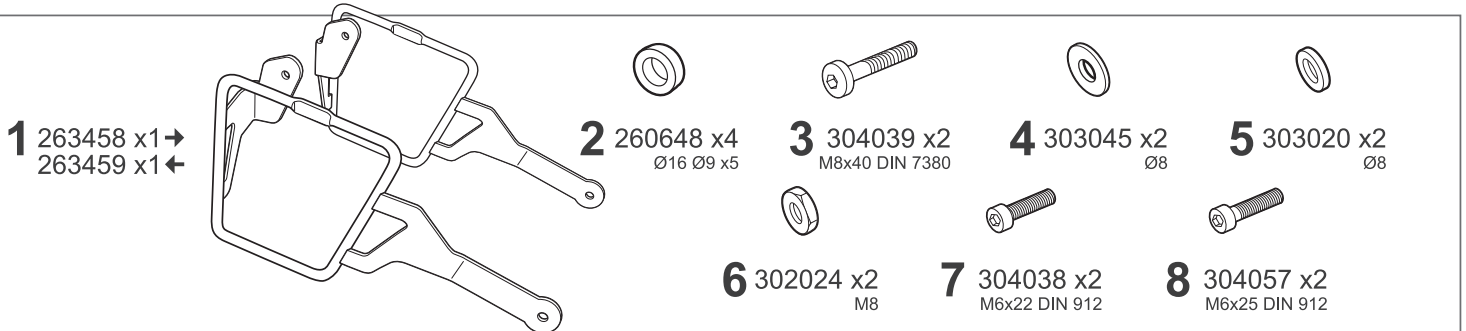


SHAD

MOTO GUZZI V7 850 STONE '23- M0V783SR



BCN



WARNING!

GB Do not fully tighten the screws until it is ensured that the KIT is correctly attached and aligned. Check tightness every 4 months.

E No apretar los tornillos del todo hasta asegurarse que el KIT está correctamente colocado y alineado. Repasar apriete cada 4 meses.

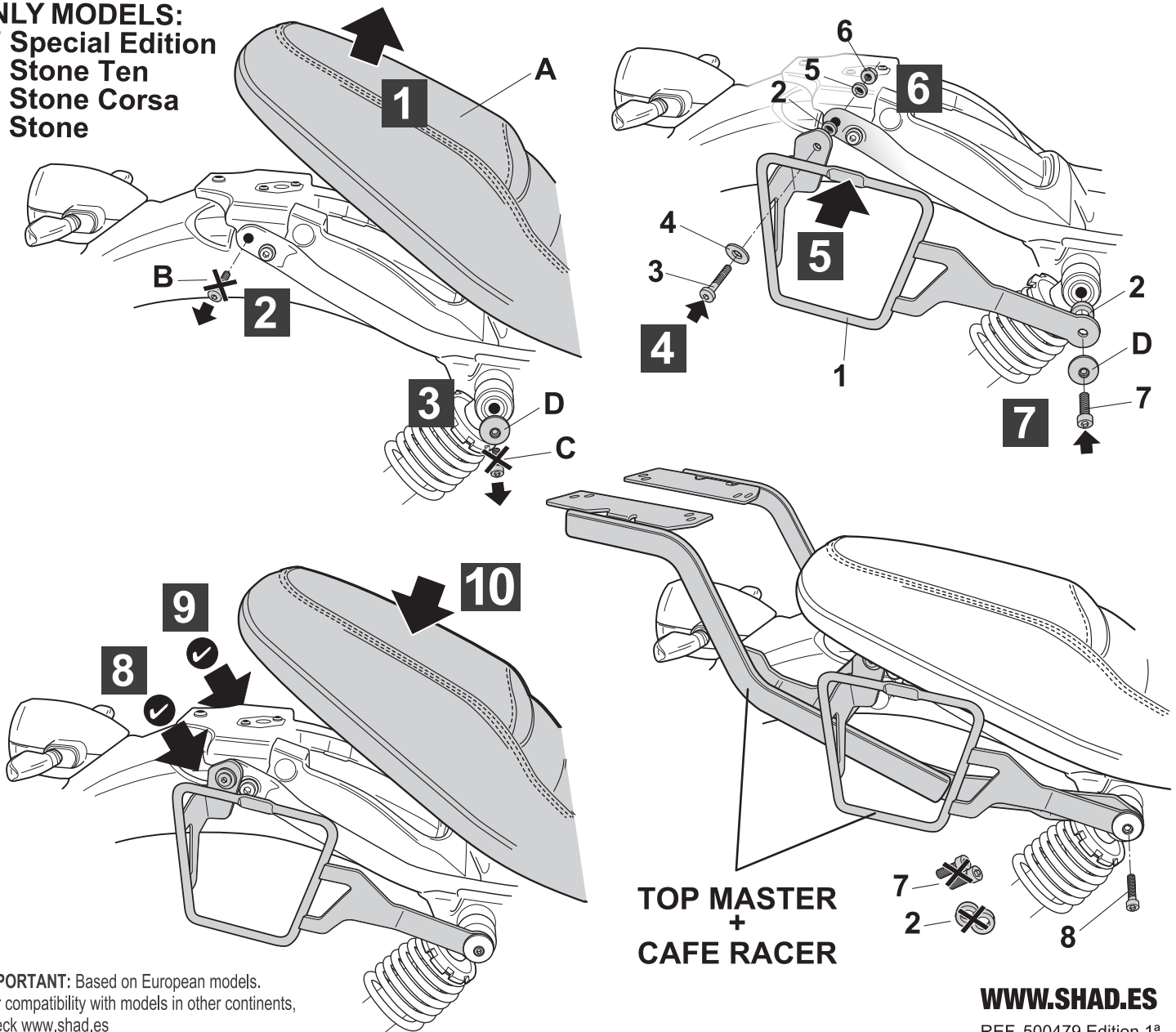
D Ziehen Sie die Schrauben nicht ganz fest, bevor Sie sich nicht vergewissert haben, daß der Bausatz korrekt eingestellt und ausgerichtet ist. Alle 4 Monate Drehmoment überprüfen.

I Non stringere del tutto le viti fin tanto non si è sicuri che il kit è collocato correttamente e allineato. Controllare il serraggio delle viti ogni 4 mesi.

F Ne pas serrer les vis avant d'être sûr que le KIT soit correctement positionné et ajusté. Vérifier le serrage des vis tous les 4 mois.

ATTENTION: For a full equip assembly, mount the Top master before the Cafe racer.

ONLY MODELS:
V7 Special Edition
V7 Stone Ten
V7 Stone Corsa
V7 Stone



IMPORTANT: Based on European models. For compatibility with models in other continents, check www.shad.es

WWW.SHAD.ES

REF. 500479 Edition 1ª