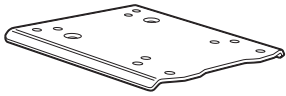


# SHAD

## CFMOTO MT 450 '23- TOP MASTER – COMT43ST

BCN



**1** 263466 x1



**2** 260641 x2  
Ø16 Ø9 Ø22



**3** 304356 x2  
M8x40 DIN 7991



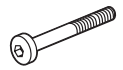
**4** 260900 x2  
Ø16 Ø9 Ø36



**5** 303045 x2  
Ø8



**6** 303027 x2  
Ø8



**7** 304170 x2  
M8x60 DIN 7380

### WARNING!

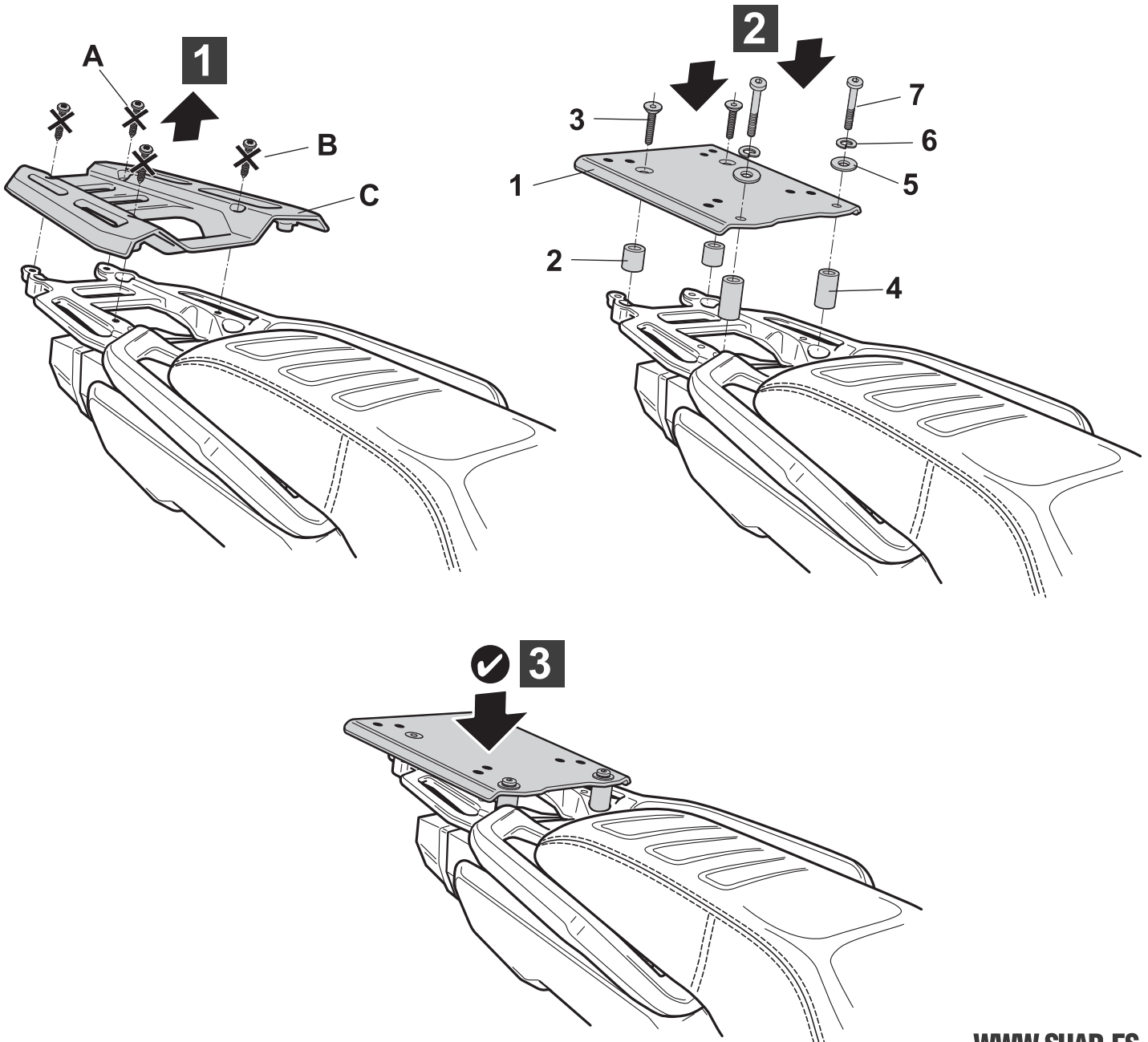
**GB** Do not fully tighten the screws until it is ensured that the KIT is correctly attached and aligned. Check tightness every 4 months.

**E** No apretar los tornillos del todo hasta asegurarse que el KIT está correctamente colocado y alineado. Repasar apriete cada 4 meses.

**D** Ziehen Sie die Schrauben nicht ganz fest, bevor Sie sich nicht vergewissert haben, daß der Bausatz korrekt eingestellt und ausgerichtet ist. Alle 4 Monate Drehmoment überprüfen.

**I** Non stringere del tutto le viti fin tanto non si è sicuri che il kit è collocato correttamente e allineato. Controllare il serraggio delle viti ogni 4 mesi.

**F** Ne pas serrer les vis avant d'être sûr que le KIT soit correctement positionné et ajusté. Vérifier le serrage des vis tous les 4 mois.



**IMPORTANT:** Based on European models.  
For compatibility with models in other continents, check [www.shad.es](http://www.shad.es)

[WWW.SHAD.ES](http://WWW.SHAD.ES)

REF. 500479 Edition 1<sup>a</sup>